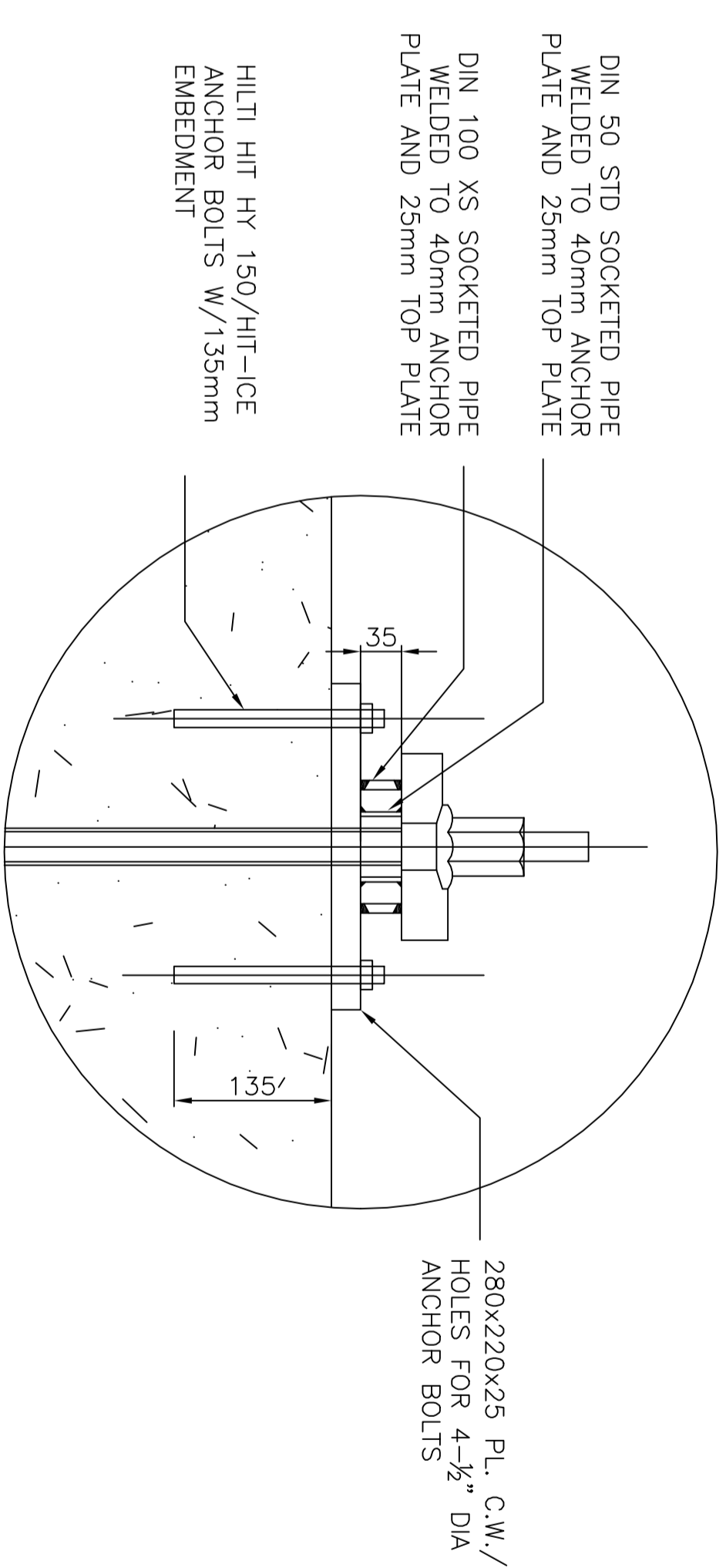
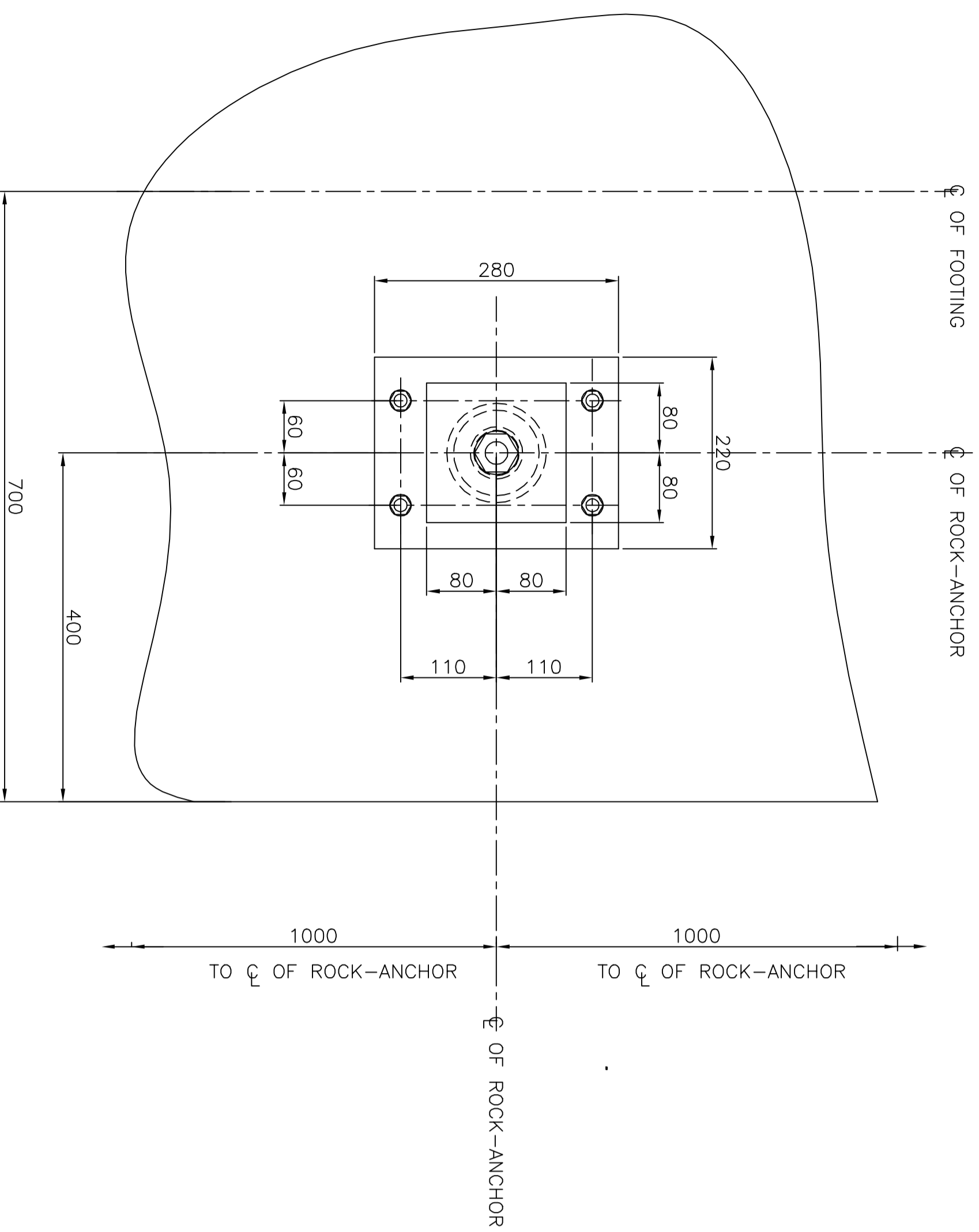


CROSS-SECTION
SCALE 1:5



ELEVATION
SCALE 1:5



PLAN ON ROCK-ANCHOR
SCALE 1:5

NOTES:

1. ROCK ANCHORS THREADBARS TO BE ANCHORED USING THE GENERALLY APPROVED ANCHOR NUTS OF THE DYWIDAG POST-TENSIONING SYSTEM (Z-13.1-19)
2. ROCK ANCHORS ARE PERMANENT ANCHORS THAT ARE SUBJECT TO APPROVAL NO. 2-20.1-17 OF DYWIDAG INT.
3. ANCHOR PLATE (SOLID PLATE) TO BE FROM MATERIAL S235JR (1.0037) ACC. DIN EN 10025 AND ANCHOR NUT TO BE FROM MATERIAL E 295 (1.0050) ACC. DIN EN 10025
4. PIPES TO BE FROM MATERIAL TO CONFORM TO ASTM-A53, Fy=250 MPa.
5. 25mm STEEL PL. ON TOP OF CONCRETE TO CONFORM TO CSA G40.21 TYPE 300W.
6. 1/2" ANCHOR BOLTS TO BE FROM A307, Fu=414 MPa OR BETTER.
7. WELDING SHALL BE IN ACCORDANCE WITH CSA STANDARD W-59, WELDING ELECTRODES TO BE COMPATIBLE WITH BASE METAL. ALL WELDS TO BE 5mm U.N.O. ON DRAWINGS.

SENIOR STRUCTURAL ENGINEER

No.	Date	Revision	By/Par

STONE ARCH CULVERT EXTENSION

NEAR MOHAWK, ONTARIO

CULVERT NORTH EXTENSION DETAILS

FOOTING GEOMETRY, REINFORCING AND DETAILS

Drawn	DGT	Designed	DGT	Checked	Scale	Date
Design		Conception		Verification	1:5	JAN 15, 2010

Office of Chief Engineer
Bureau de l'ingénieur en chef

