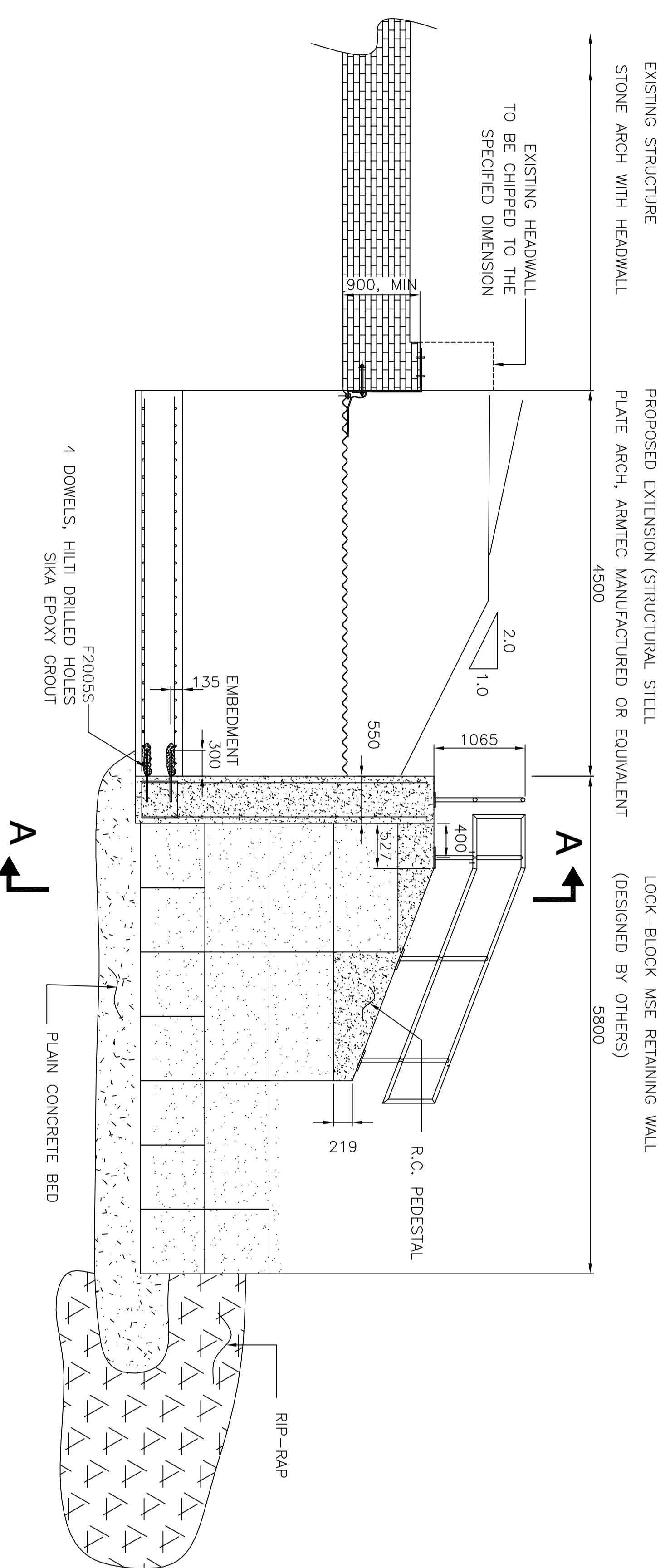
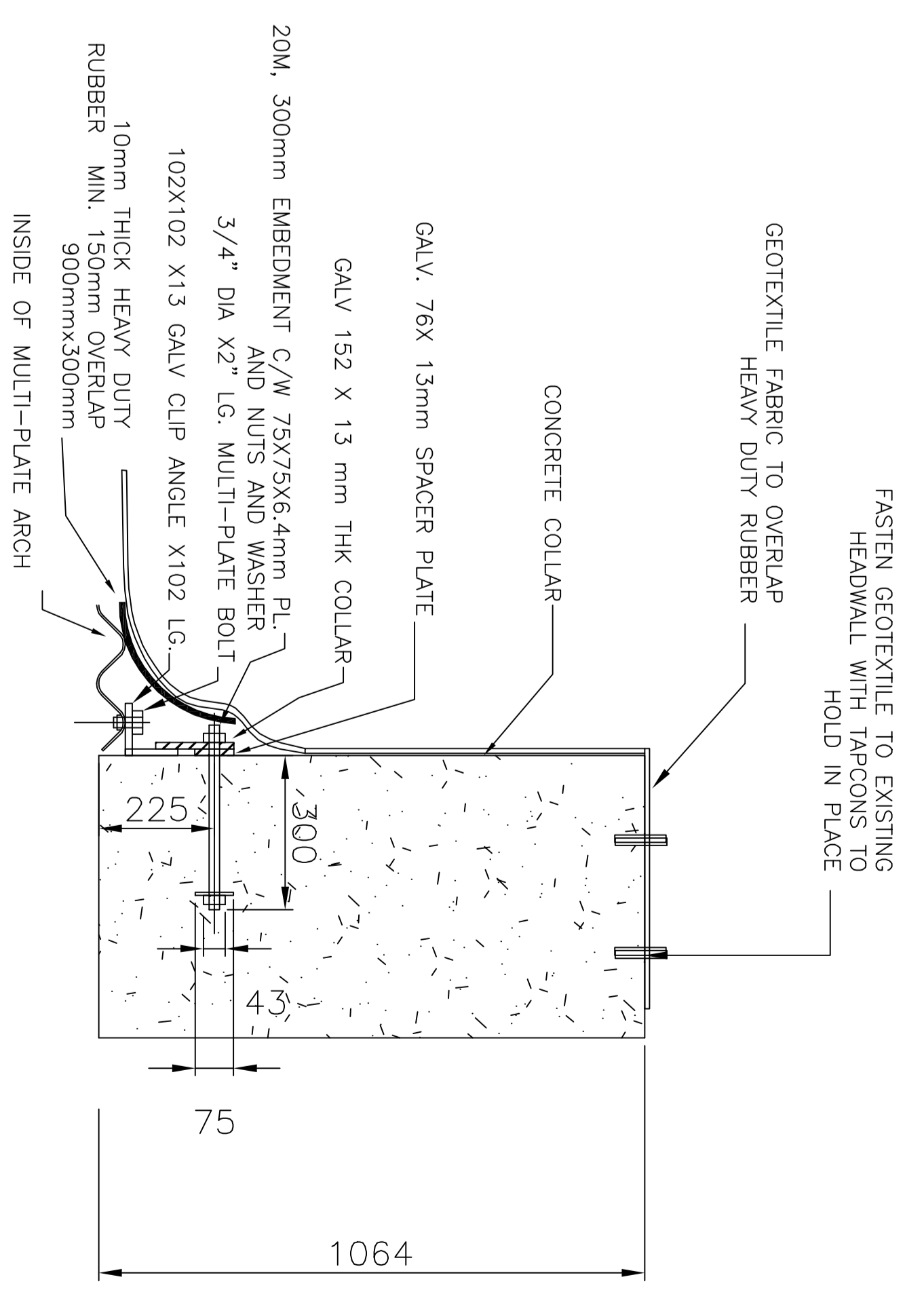


CONCRETE HEADWALL  
1:25

A-A



SP ARCH EXTENSION W/ CONCRETE HEADWALL AND RETAINING LOCK-BLOCK WALL  
1:40



B-B  
1:10

BILL OF MATERIALS

- SUPPLIED BY ARCH SUPPLIER:
1. CLIP ANGLE 102X102X13X102 LENGTH----- EA 23
  2. BOLTS 3/4"x50m----- EA 23
  3. GALV 78X13 SPACER PL----- EA 1
  4. GALV 152X13 COLLAR----- EA 1
  5. ANCHORS (20M, 350mm)----- EA 23
- SUPPLIED BY MSE WALL SUPPLIER:
1. 750X750X1500mm LOCK-BLOCKS----- EA 32 BY SUPPLIER
  2. GEOGRIDS-----
- SUPPLIED BY CN RAIL:
1. CONCRETE COLLAR----- 8.5m<sup>3</sup>

SENIOR STRUCTURAL ENGINEER

No.	Date	Revision	By/For
C	JAN 16, 2011	GENERAL REVISION	
B	JAN 25, 2011	RETAINING WALL REVISION	
A	DEC 14, 2010	GENERAL REVISION	
	JAN 15, 2010	ISSUED FOR CONSTRUCTION	
	SEPT 16, 2009	ISSUED FOR TENDER	

STONE ARCH CULVERT EXTENSION  
NEAR MOHAWK, ONTARIO  
CULVERT NORTH EXTENSION DETAILS  
COLLAR/RETAINING WALL DETAILS

Drawn	DGT	Designed	DGT	Checked	Scale	Date
Design		Conception		Verification	AS NOTED	JUN 15, 2010

Office of Chief Engineer  
Bureau de l'ingénieur en chef

