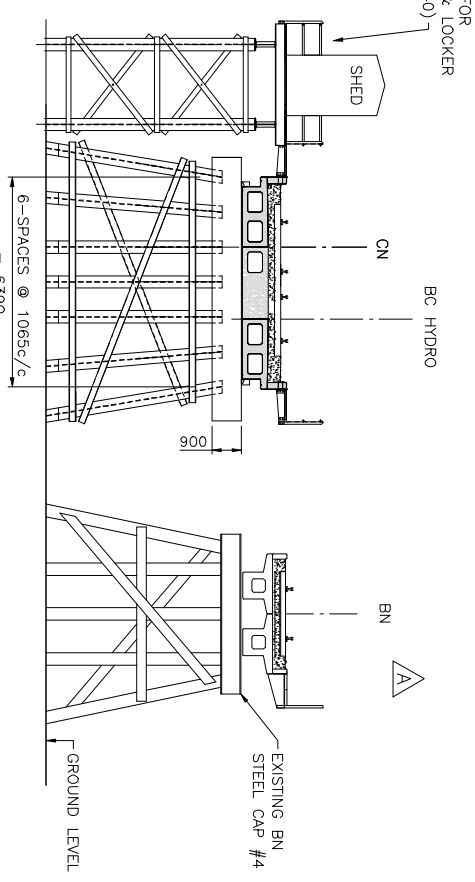
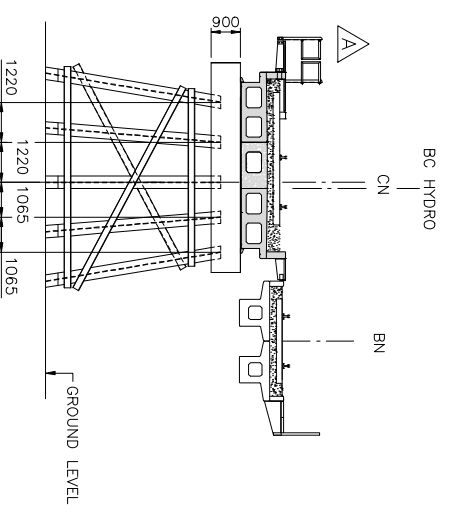


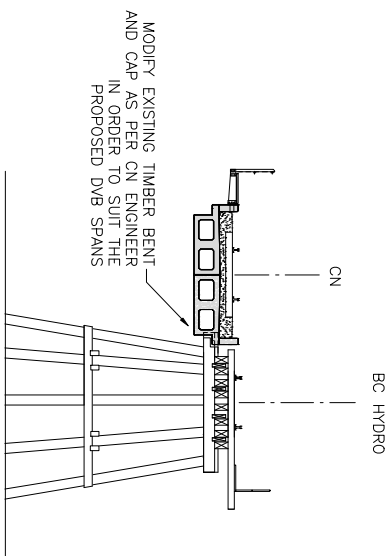
SECTION B
(BENT #45)
20.1



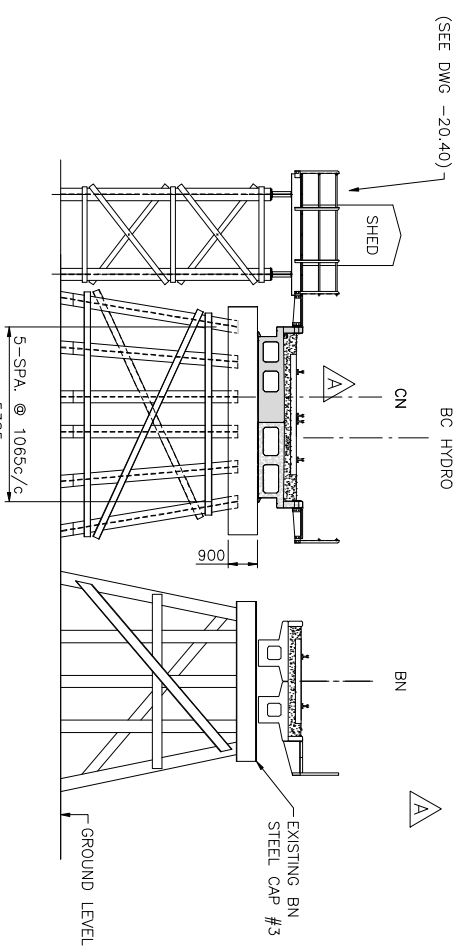
SECTION E
(BENT #47)
20.1



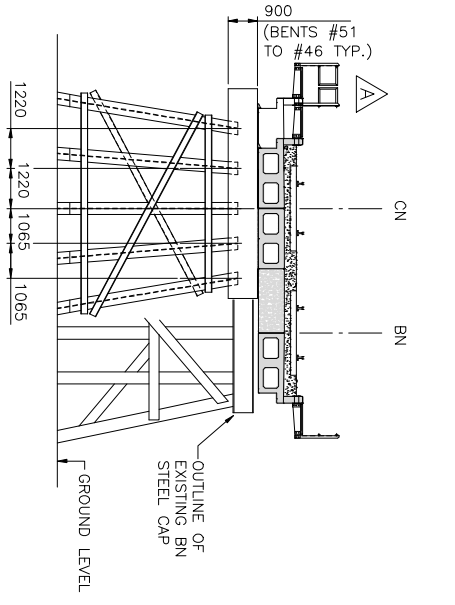
SECTION H
(BENT #50)
20.1



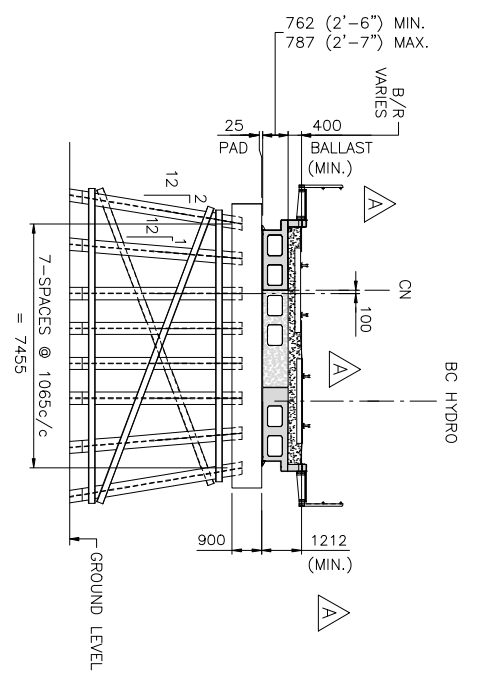
SECTION C
(BENT #46)
20.1



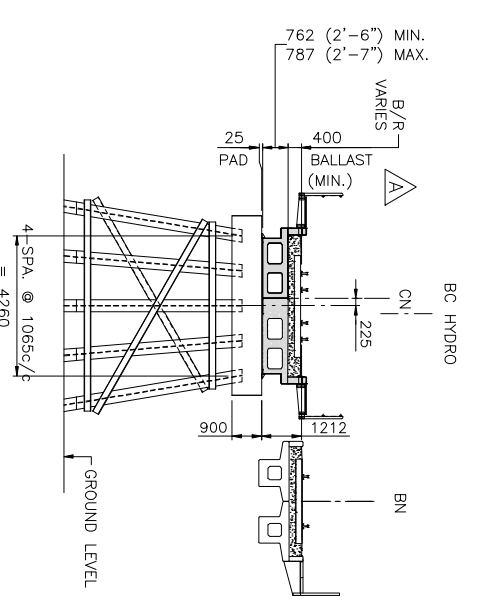
SECTION F
(BENT #48)
20.1



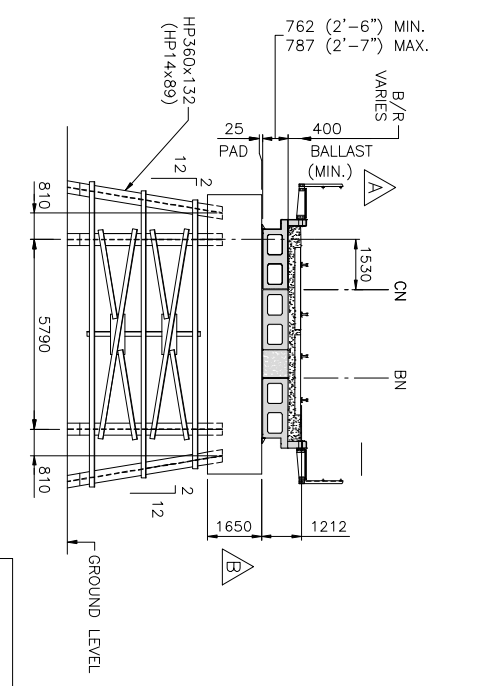
SECTION J
(BENT #51)
20.1



SECTION D
(BENT #46)
20.1



SECTION G
(BENT #49)
20.1



SECTION K
(BENT #52)
20.1

NOTES:
- FOR GENERAL NOTES, SEE DRAWING -20.1
- THIS DRAWING SHALL BE READ IN CONJUNCTION WITH DWG. -20.1

SENIOR STRUCTURAL ENGINEER

No.	Date	Description	By/Rev
B	09/04/22	BENT #45, #52, PILE DETAILS, PLATFORM, MARKINGS	WC
A	09/07/22	ELEVATIONS, CONCRETE COLLAR, PLATFORM, NOT ISSUED YET	WC
A	08/08/12	ISSUED FOR PILING TENDER	WC

Division: WEST
Sub-division: YALE
Title: 118.70

FRASER RIVER BRIDGE
NEW WESTMINSTER, B.C.

PHASE I - APPROACH REPLACEMENT BENTS #46 TO #56
GENERAL LAYOUT SHEET 2 OF 2

Drawn: **WC** Designated: **WC** Checked: **WC** Scale: **1:100** Date: **08/08/12**
 Conception: **WC** Verification: **WC** Schedule: **118.70**

Office of Chief Engineer
Bureau de l'ingénieur en chef

CN

File Reference: **118.70 YALE** Drawing Number: **AA553-118.70-20.2** **B**