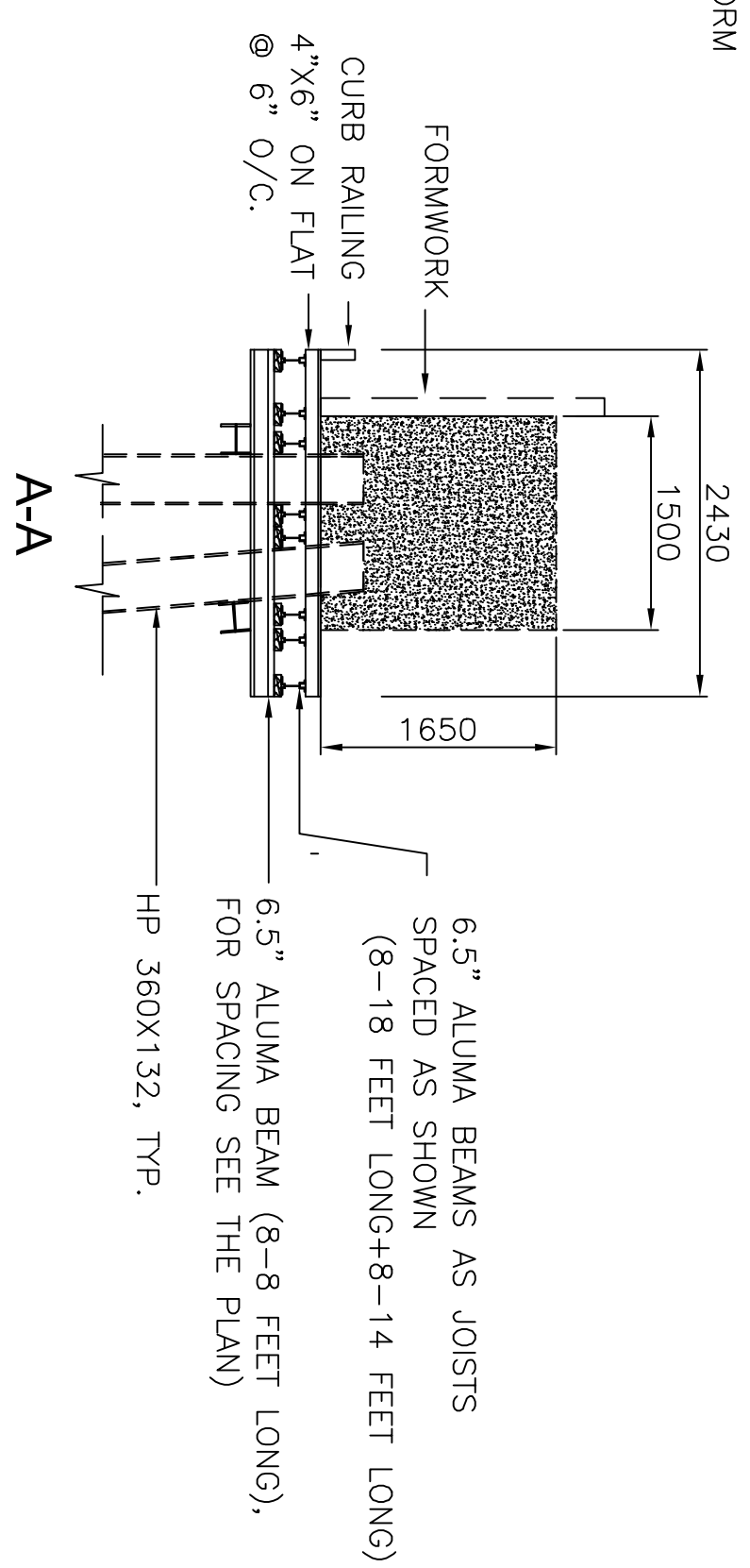
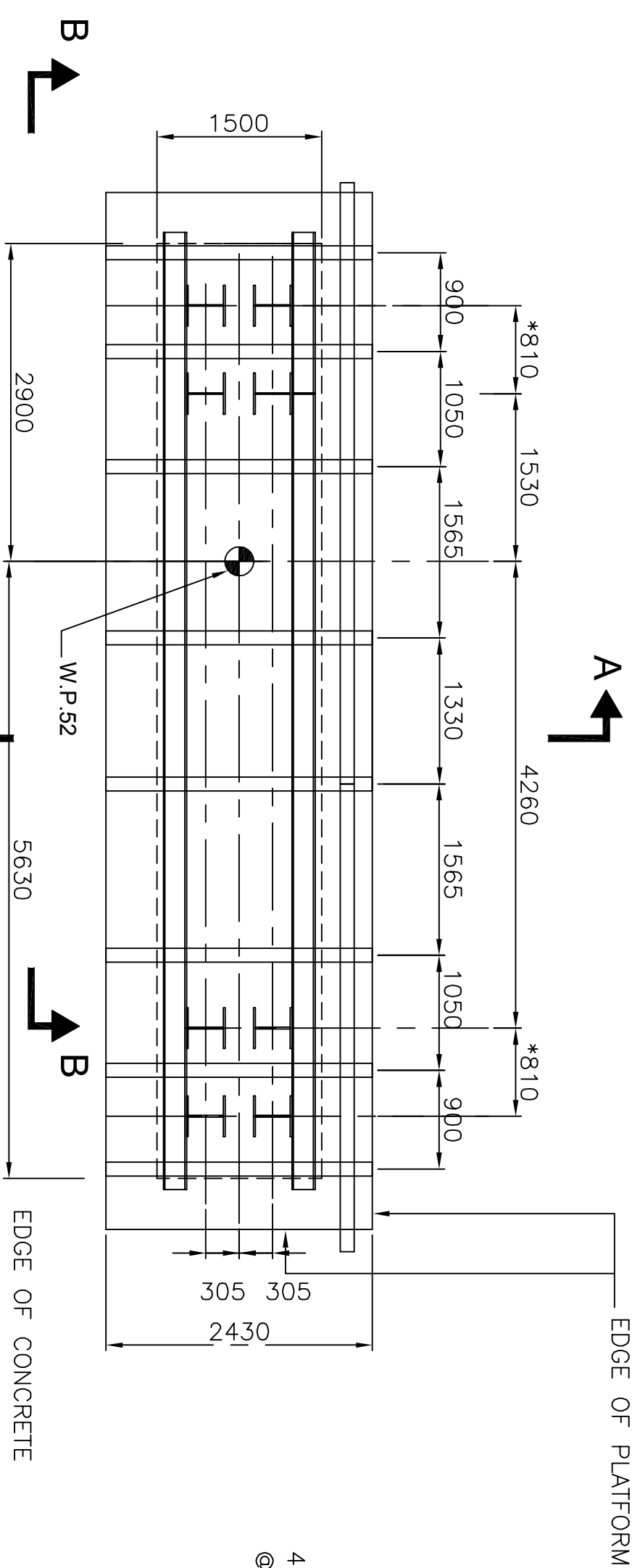
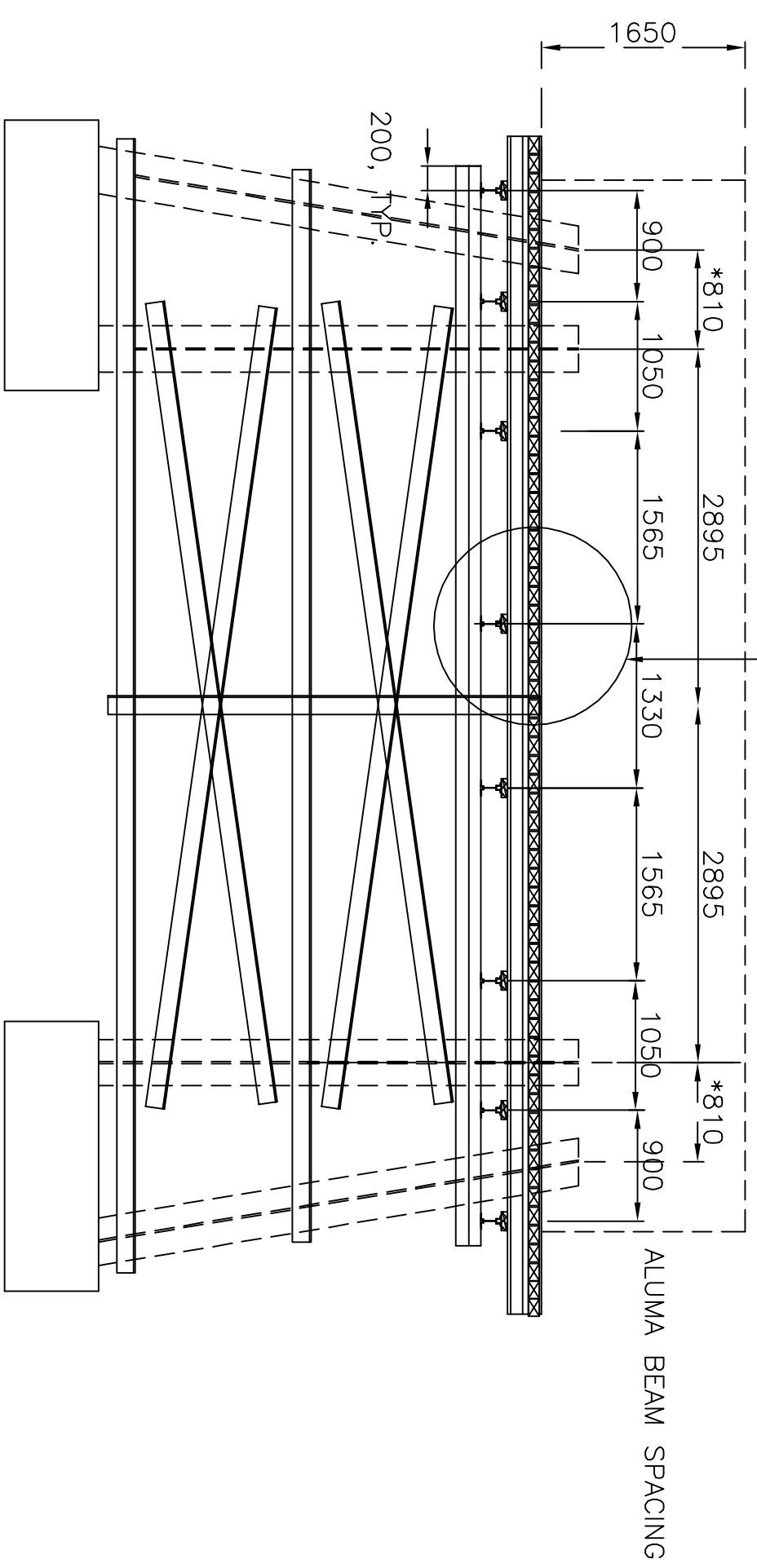


**PILE CAP SCAFFOLD
(BENT #52)**



PLAN
1:50

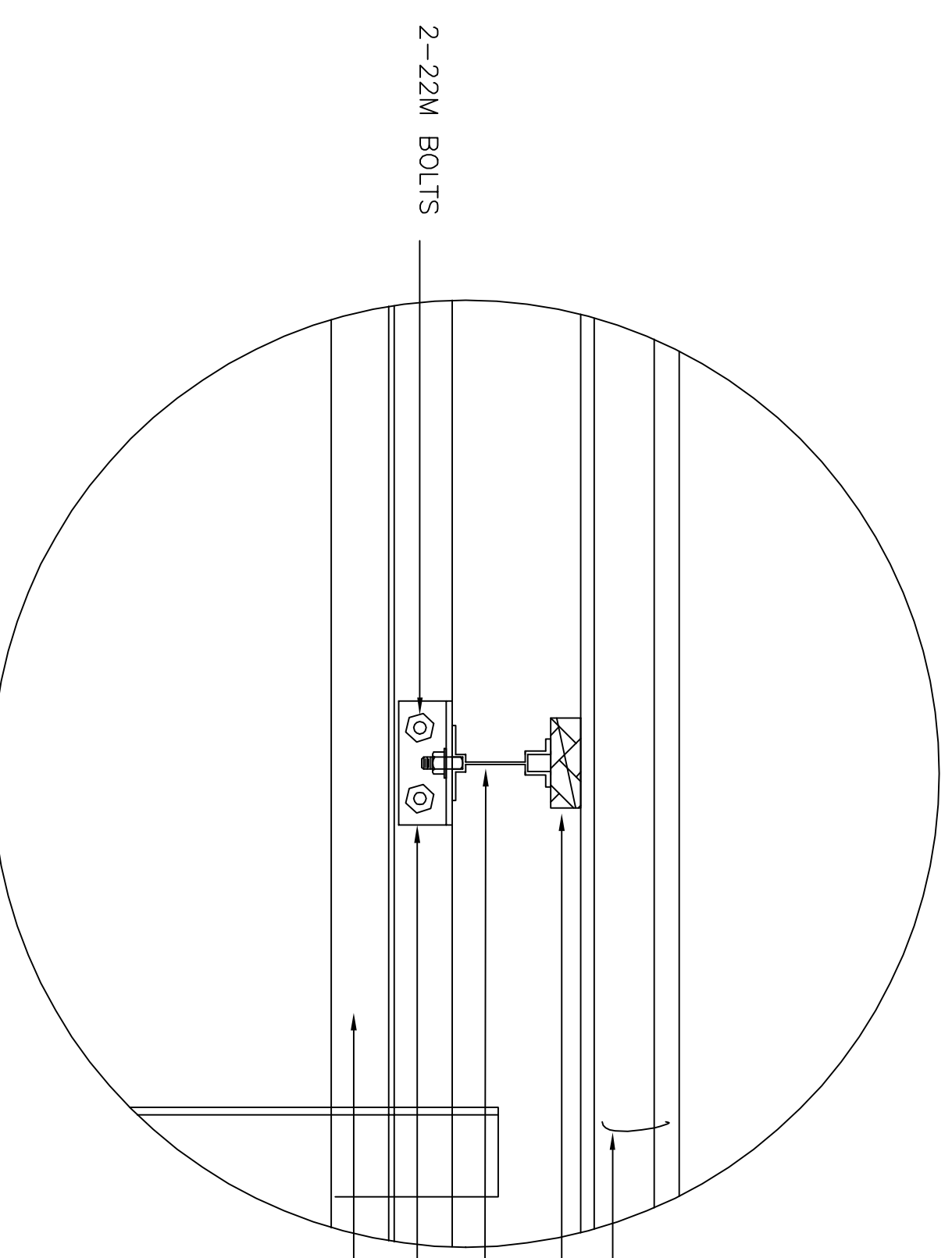
DETAIL 1
1:10



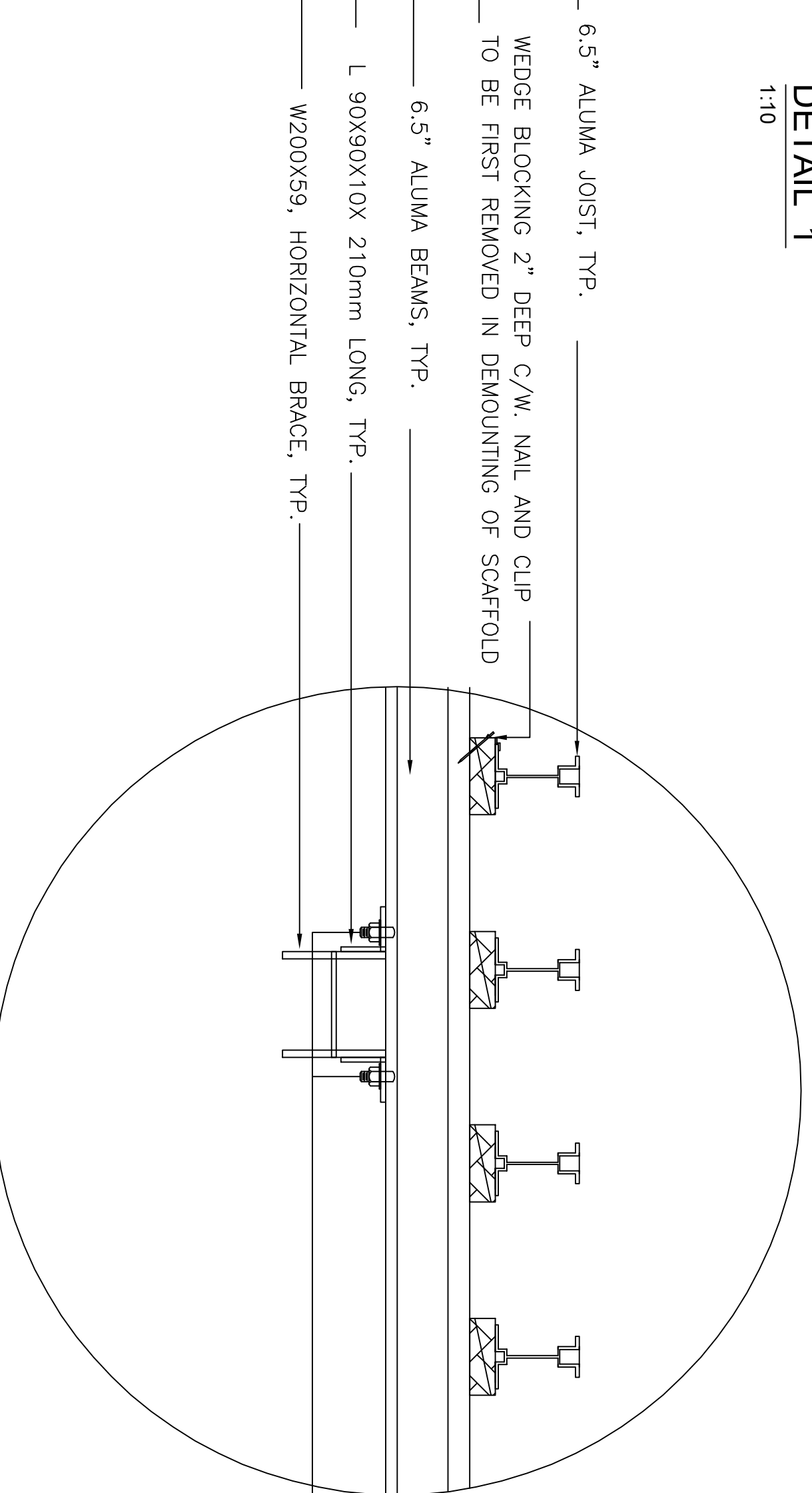
SECTION B-B
1:50

* 810 THIS DIMENSION TO BE CONFIRMED ON SITE

DETAIL 1
1:10



VIEW



SECTION

- NOTES:**
1. TIMBER TO BE DOUGLAS FIR, NO. 2 OR BETTER GRADE
 2. FOR STEEL AND BOLTS SEE GENERAL NOTES
 3. 6.5" ALUMA BEAMS AS PER ALUMA SYSTEMS ENGINEERING OR EQUIVALENT

SENIOR STRUCTURAL ENGINEER

FRASER RIVER BRIDGE
NEW WESTMINSTER, B.C.
PILE CAP SCAFFOLD BENTS #46 TO #56
SHEET 2

Drawn	Design	Checked	Scale	Date
DGT	DGT	PW	AS NOTED	MARCH 23 09

No.	Date	By/Part	Division	Sub-division	Revision	Mile	Date
MARCH 23, 09			WEST		ISSUED FOR CONSTRUCTION		

Office of Chief Engineer
Bureau de l'ingénieur en chef

